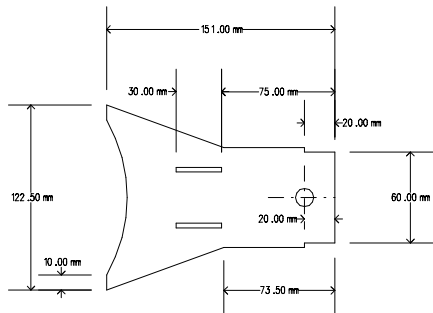
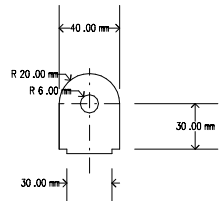


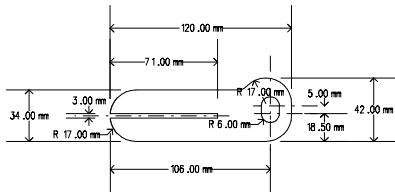
Lower Wishbones - Front (2 off)



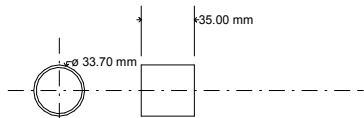
1 per side - 3mm mild steel



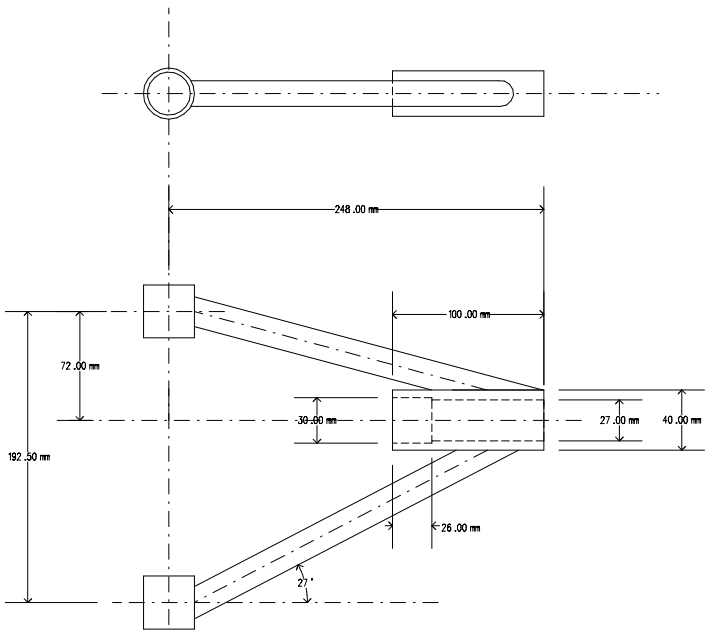
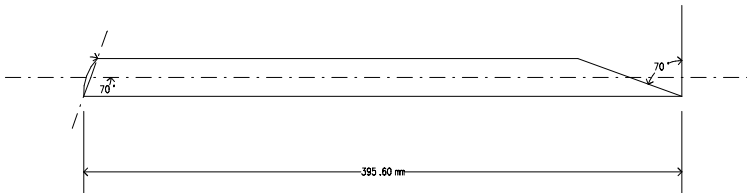
2 per side - 3mm mild steel



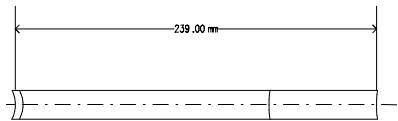
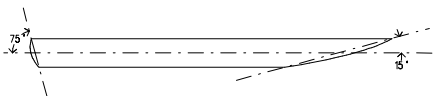
2 per side - 3mm mild steel



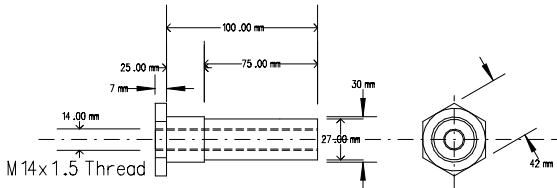
33.7x2.6 ERW Tube - Common to both upper and lower wishbones. (4 off)



Upper Wishbones - front 2 off

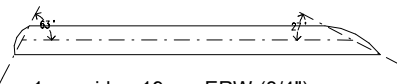
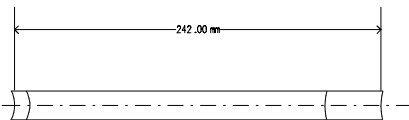


1 per side - 19mm ERW (3/4")



*NB. The insert is tapped for a BMW 7 Series tie rod end which has a perfect taper to match that of the upper point of the MX5 uprights. The builder must make a decision as to whether the M14 fine thread is sufficiently robust for their application.

The insert can be tapped with an M18 fine thread to suit the more commonly used Transit drag link end but if this is the case the MX5 upright will require machining to suit.



1 per side - 19mm ERW (3/4")

Project	Voodoo Autokits VR5		
Drawing Title	VR5-011 - Front Wishbones		
Date	22/08/2011	Revision	1.0.1
Drawn By	Matt Barrett		

© Vodou Auto Kits Ltd - 2011
This drawing is for non commercial use only. This drawing may not be copied, reproduced, distributed, republished, uploaded, posted, or transmitted in any way without the prior written consent of Vodou Auto Kits Ltd.

Neither title nor intellectual property rights are transferred to you by the use of or access to this drawing; rather, all rights, title and interest in and to all respects of the drawing remain the property of Vodou Auto Kits Ltd.

